

# greymatter.io

CONTROL. SECURE. SEE.

## Empowering Missions for C2E & JWCC

WE  
PROUDLY  
SUPPORT

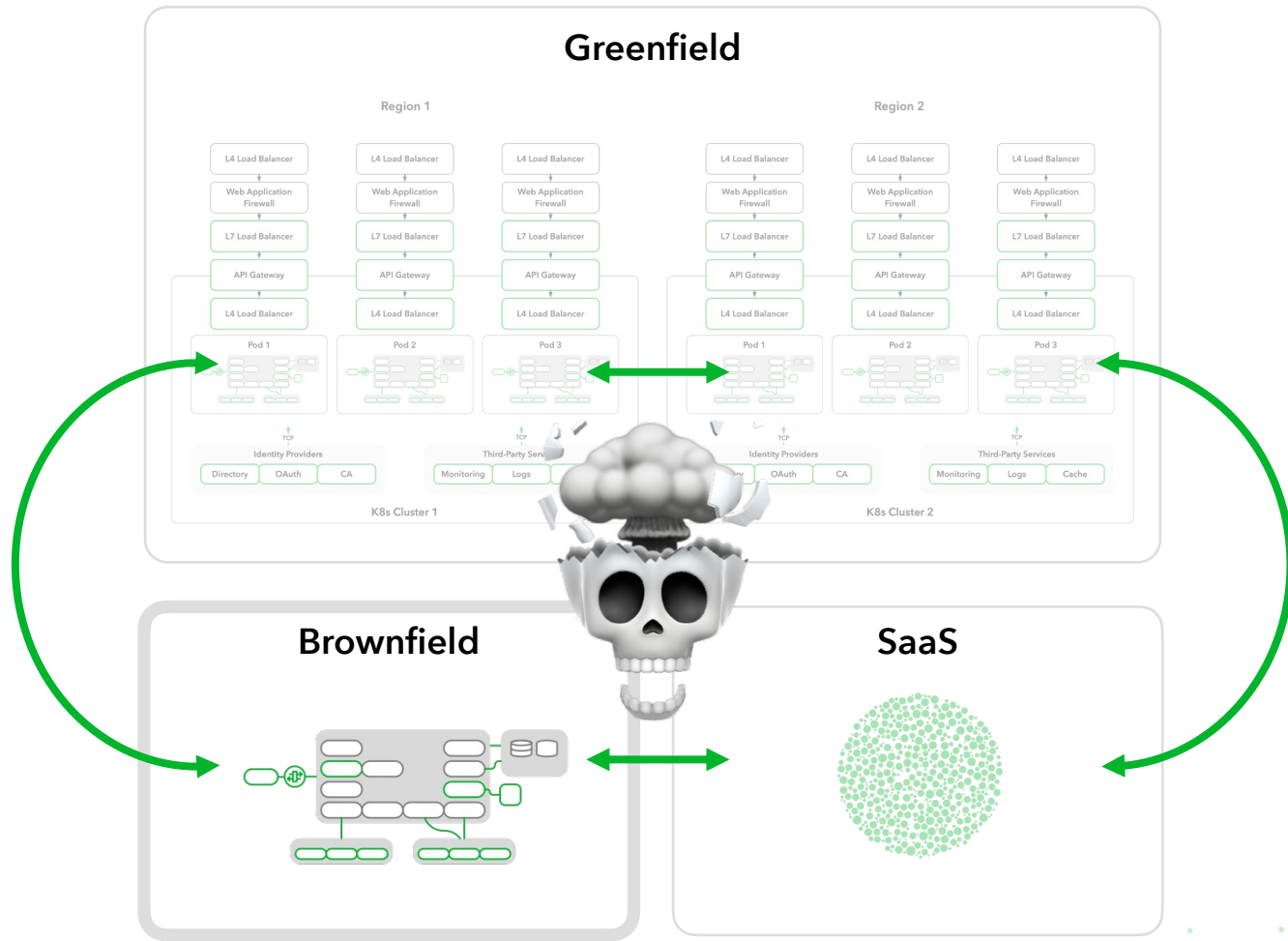


 **CLOUD NATIVE**  
COMPUTING FOUNDATION

# BATTLEFIELD AND CLOUD COMPLEXITY WILL COLLIDE



## HYBRID/MULTI-CLOUD IS MISSION CRITICAL



### Challenges:

- ✓ Application and Service Deployment fatigue
- ✓ Supply chain risk mitigation
- ✓ COOP - Continuity Of Operations
- ✓ Configuration management and control
- ✓ Limited cost insights across environments

### Opportunities:

- ✓ Cross cloud interoperability
- ✓ CISO zero-trust realization
- ✓ Collaborative mission capabilities
- ✓ Improved resource management and identification

# HYBRID AND MULTI-CLOUD SOLUTIONS FOR THE WARFIGHTER



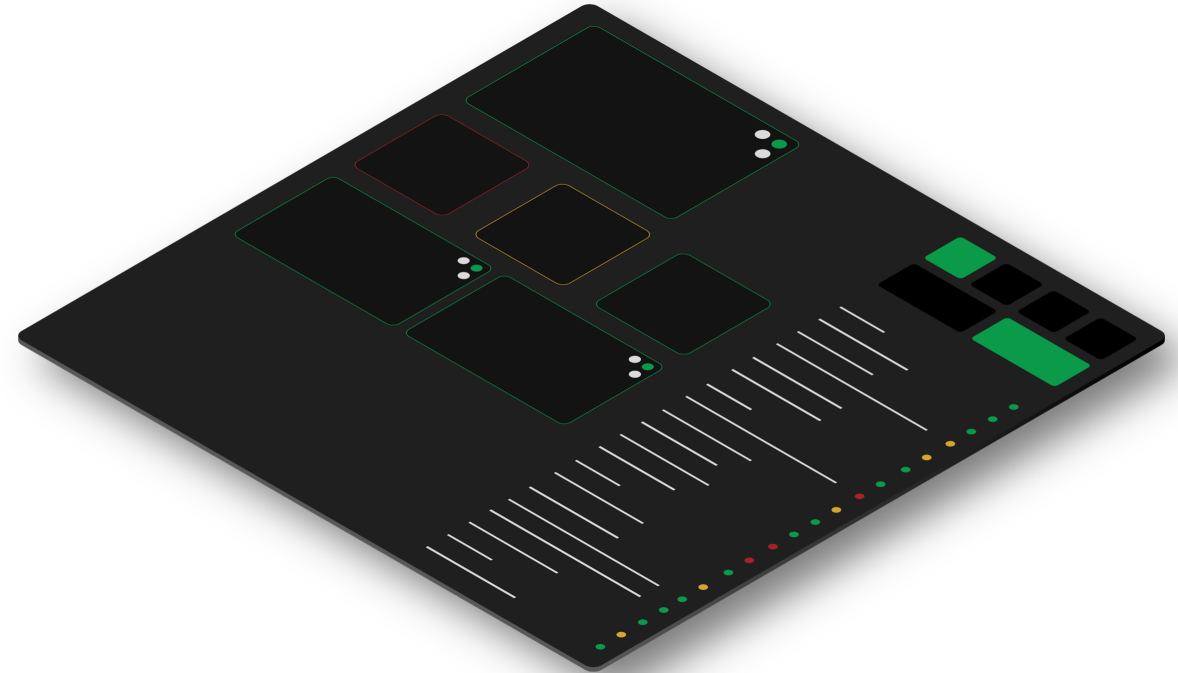
## MANY MISSIONS MULTIPLE CLOUDS

- ✓ Enhance mission interoperability
- ✓ Deliver new capabilities faster at lower costs
- ✓ Capture app networking stats, metrics & audits For analytics
- ✓ Future-proof NIST zero-trust Compliance
- ✓ Reduce downtime and Lower MTTR from hours to minutes
- ✓ Decrease time from dev to ops from months to hours
- ✓ Accredited on the most sensitive networks

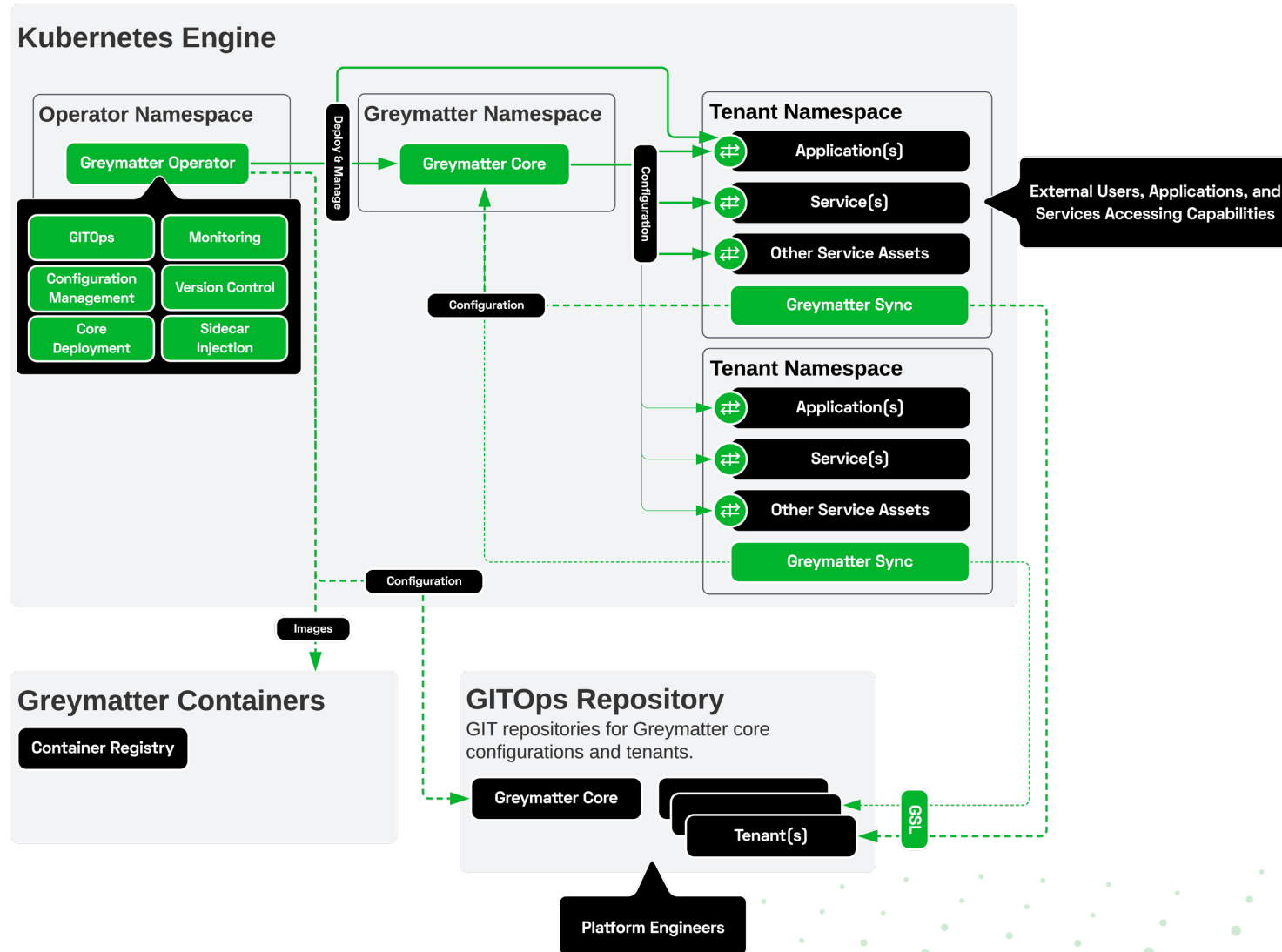


## DEMO

- ❖ Simplicity in configurations for connectivity between apps and APIs cross-cloud
- ❖ Traffic control across multi- and hybrid cloud
- ❖ Regional failover
- ❖ Audit trails



# GREYMATTER MULTI-CLOUD ARCHITECTURE



**GREYMATTER DELIVERS UNPRECEDENTED  
CONTROL, SECURITY, AND VISIBILITY.**

Jen Webster | Account Executive  
[Jen.webster@greymatter.io](mailto:Jen.webster@greymatter.io)

Billy Miller | Solutions Architect  
[Billy.miller@greymatter.io](mailto:Billy.miller@greymatter.io)



# EMPOWERING MISSIONS FOR C2E & JWCC

Presented by Greymatter.io and Carahsoft



**Billy Miller**

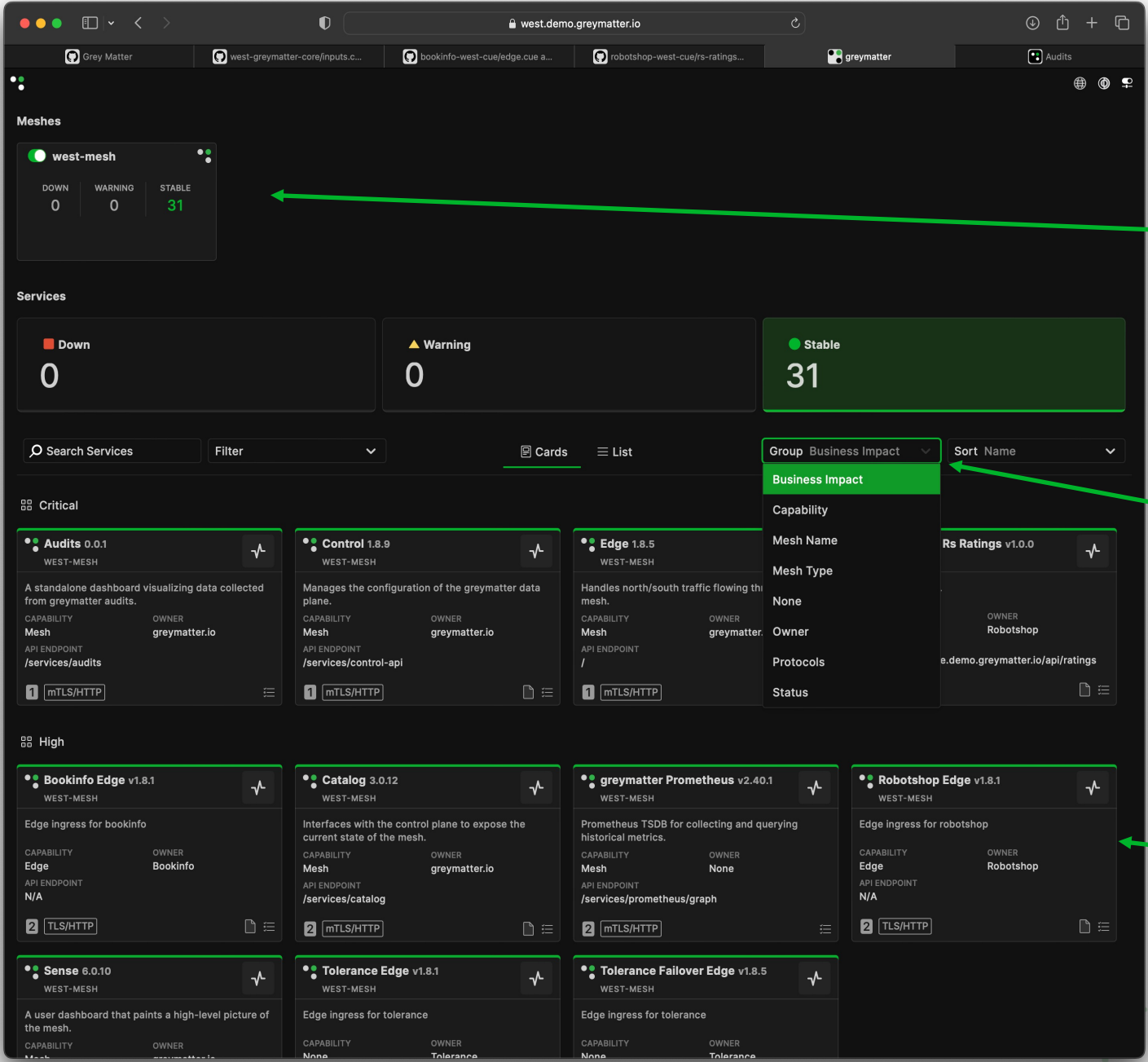
Solutions Architect  
| CTO Team



**Jen Webster**

Account Executive  
| Public Sector

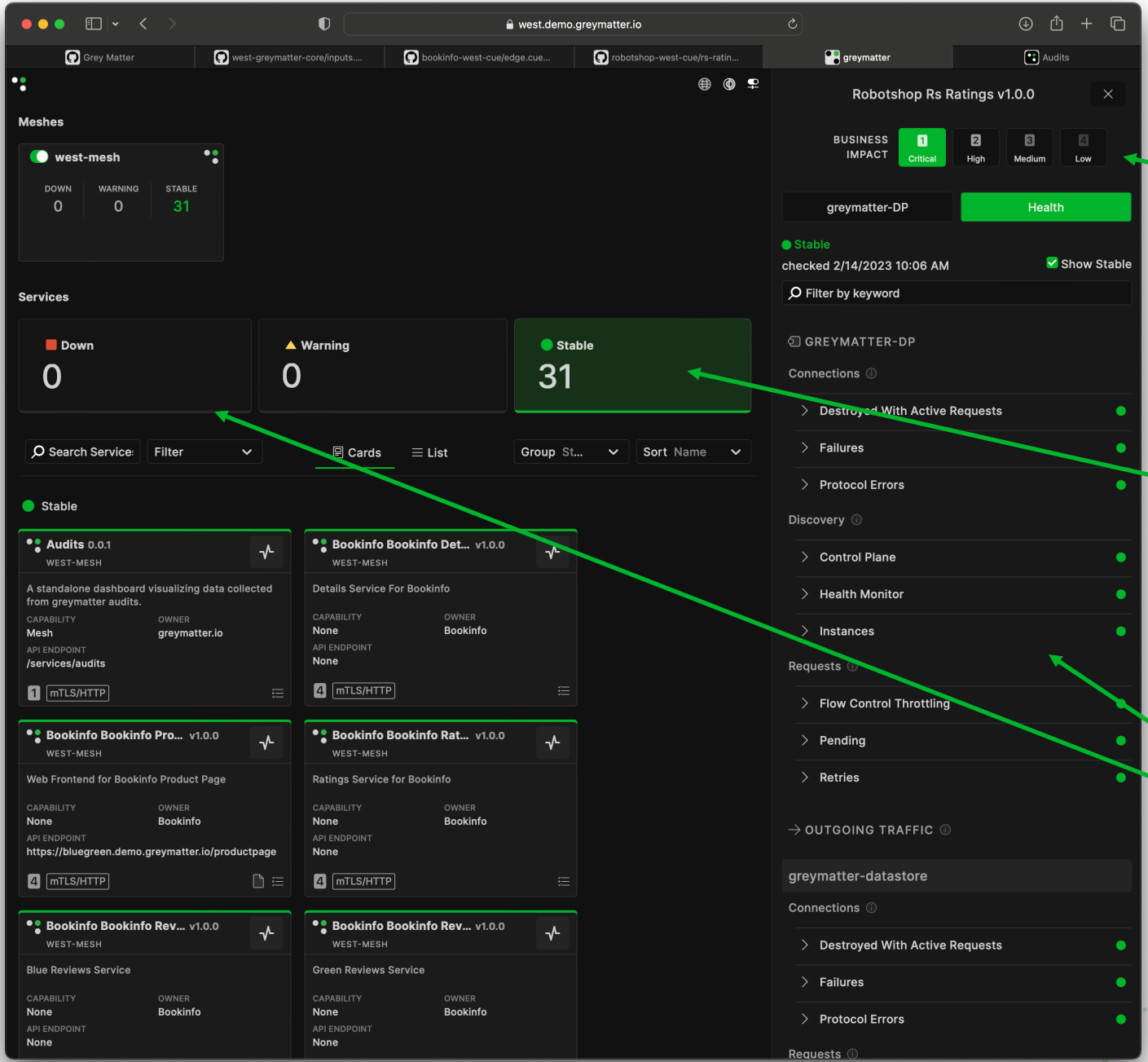
## THANK YOU!



Mesh-connections visualize multiple mesh setups in one dashboard

Dynamic card view by group type

Card and list view with key metadata showing protocols, summary, mesh segment, and health



Curated impact levels facilitate with critical, cyber business impact analysis to the App, API, and service layer

Glanceable metrics and filter status with most active at the top

Dynamic quick view service health status

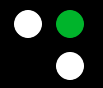
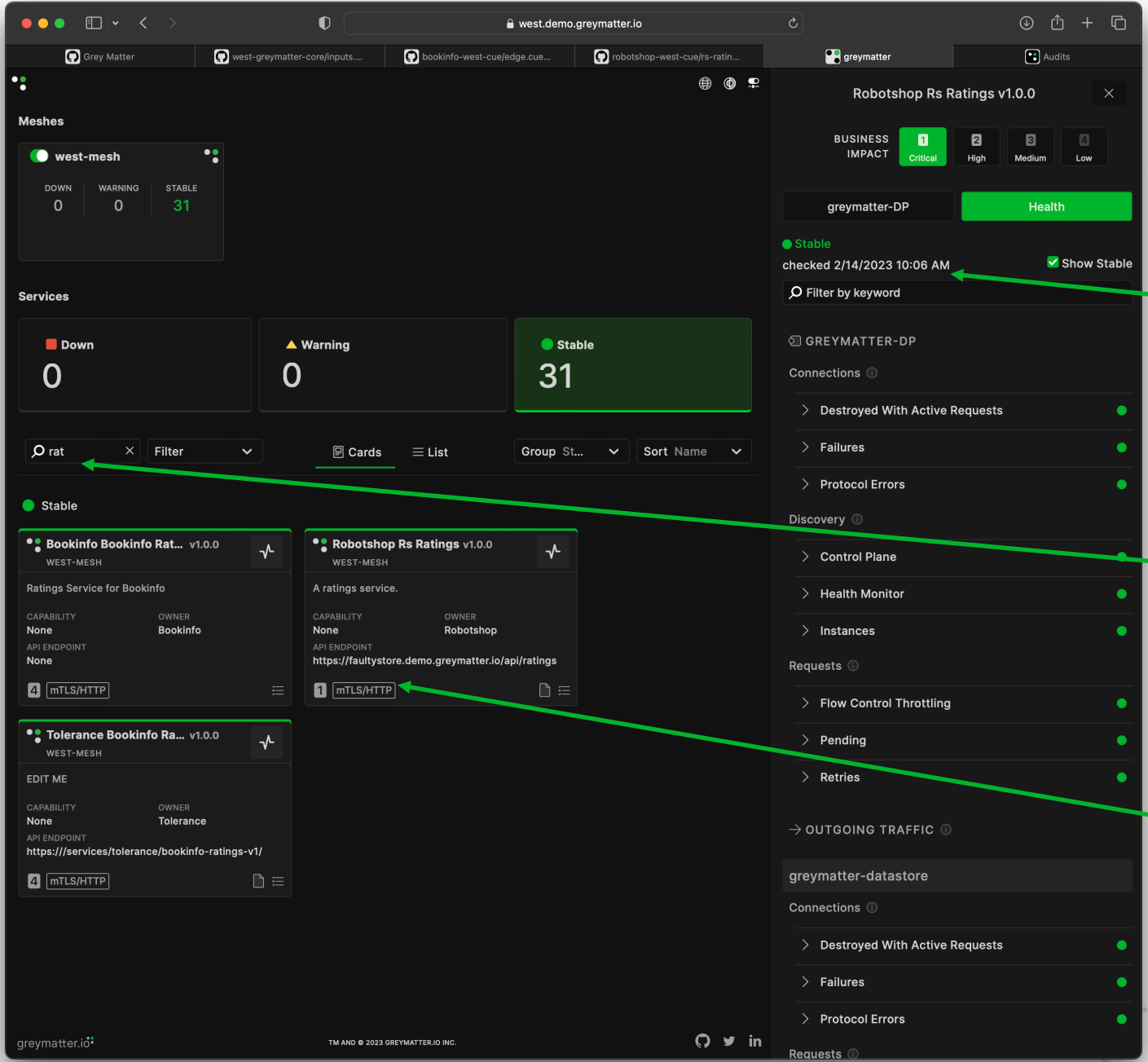


The screenshot displays the Greymatter dashboard interface. At the top, there are tabs for 'Grey Matter', 'west-greymatter-core/inputs...', 'bookinfo-west-cue/edge.cue...', 'robotshop-west-cue/rs-ratin...', 'greymatter', and 'Audits'. The main content area is divided into several sections:

- Meshes:** A card for 'west-mesh' showing 0 DOWN, 0 WARNING, and 31 STABLE services.
- Services:** A summary card showing 0 Down, 0 Warning, and 31 Stable services. Below this is a search bar and a filter dropdown menu.
- Filter Menu:** A dropdown menu with sections for STATUS (Stable: 31), BUSINESS IMPACT (Low: 20, High: 7, Critical: 4), and OWNER (Bookinfo: 6, greymmatt...: 5, Robotsh...: 13, Telepoo: 0).
- Service Cards:** A grid of service cards, including 'Audits 0.0.1', 'Bookinfo Bookinfo Det... v1.0.0', 'Bookinfo Bookinfo Pro... v1.0.0', 'Bookinfo Bookinfo Rat... v1.0.0', 'Bookinfo Bookinfo Rev... v1.0.0', and 'Bookinfo Bookinfo Rev... v1.0.0'. Each card shows details like CAPABILITY, OWNER, and API ENDPOINT.
- Right Panel:** A detailed view of 'Robotshop Rs Ratings v1.0.0'. It shows a 'BUSINESS IMPACT' of 'Critical' (1), a 'Health' status of 'Health', and a list of connections including 'OUTGOING TRAFFIC', 'greymatter-datastore', and 'Destroyed With Active Requests'.

Search, Filter, Sort, Group all cataloged services across your multi-cloud/hybrid environments

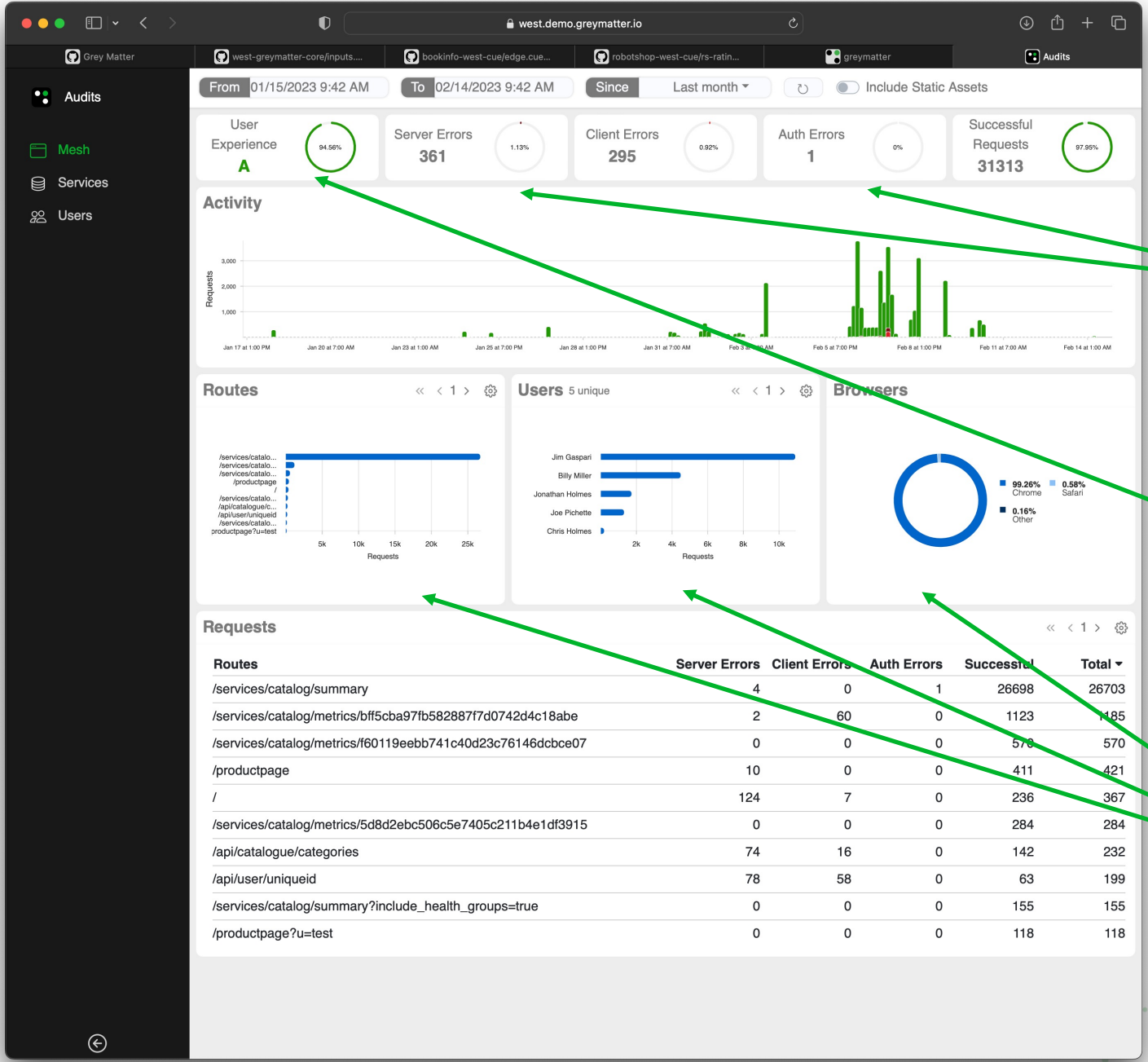
Drill down to dependency check for all outgoing traffic connections to include APIs, other Apps, and data sources



Stability tracking updated on the fly

Dynamic keyword filtering

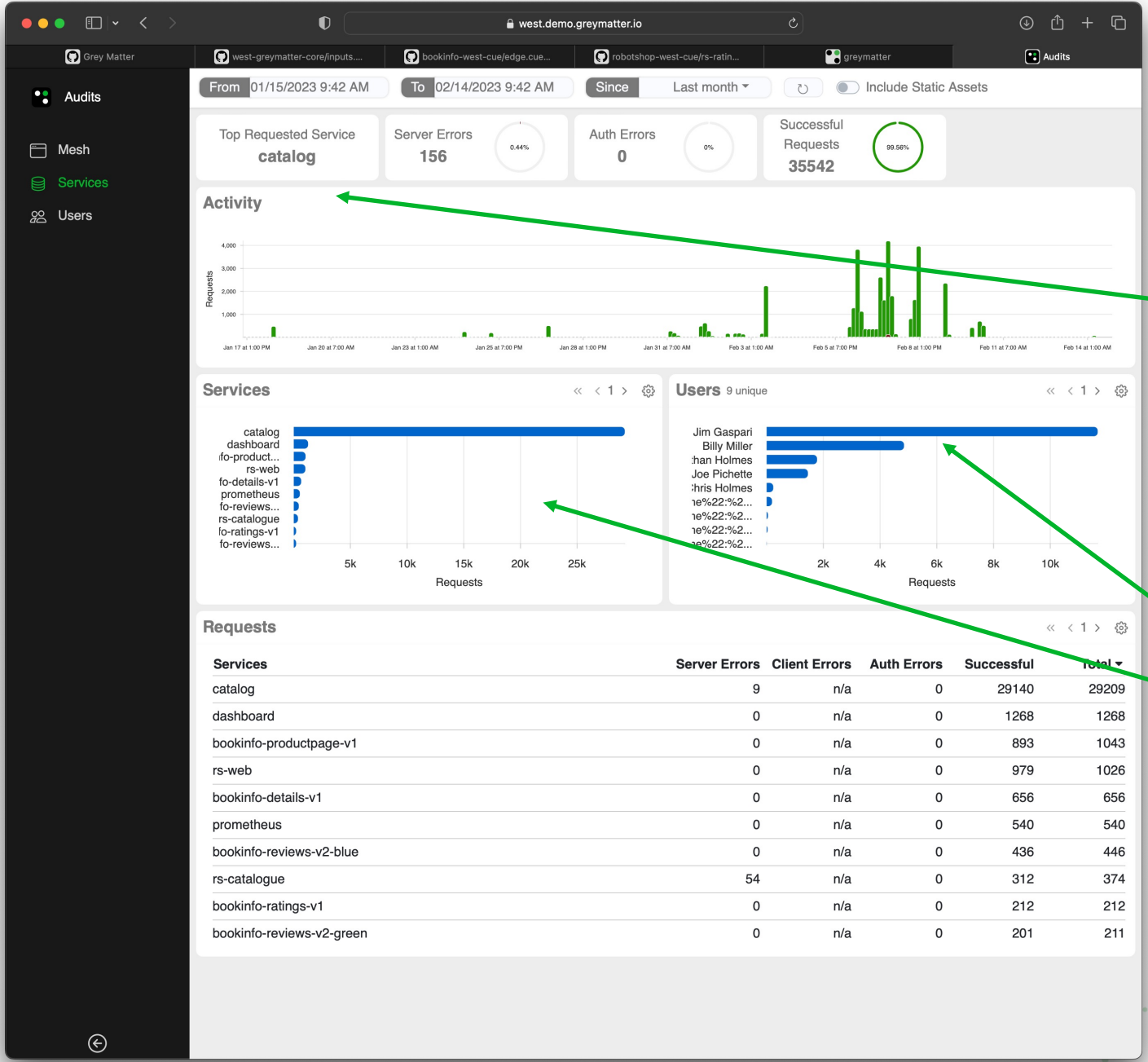
Multi-protocol support for HTTP and TCP Network services



Route-level server, client, and auth error tracking

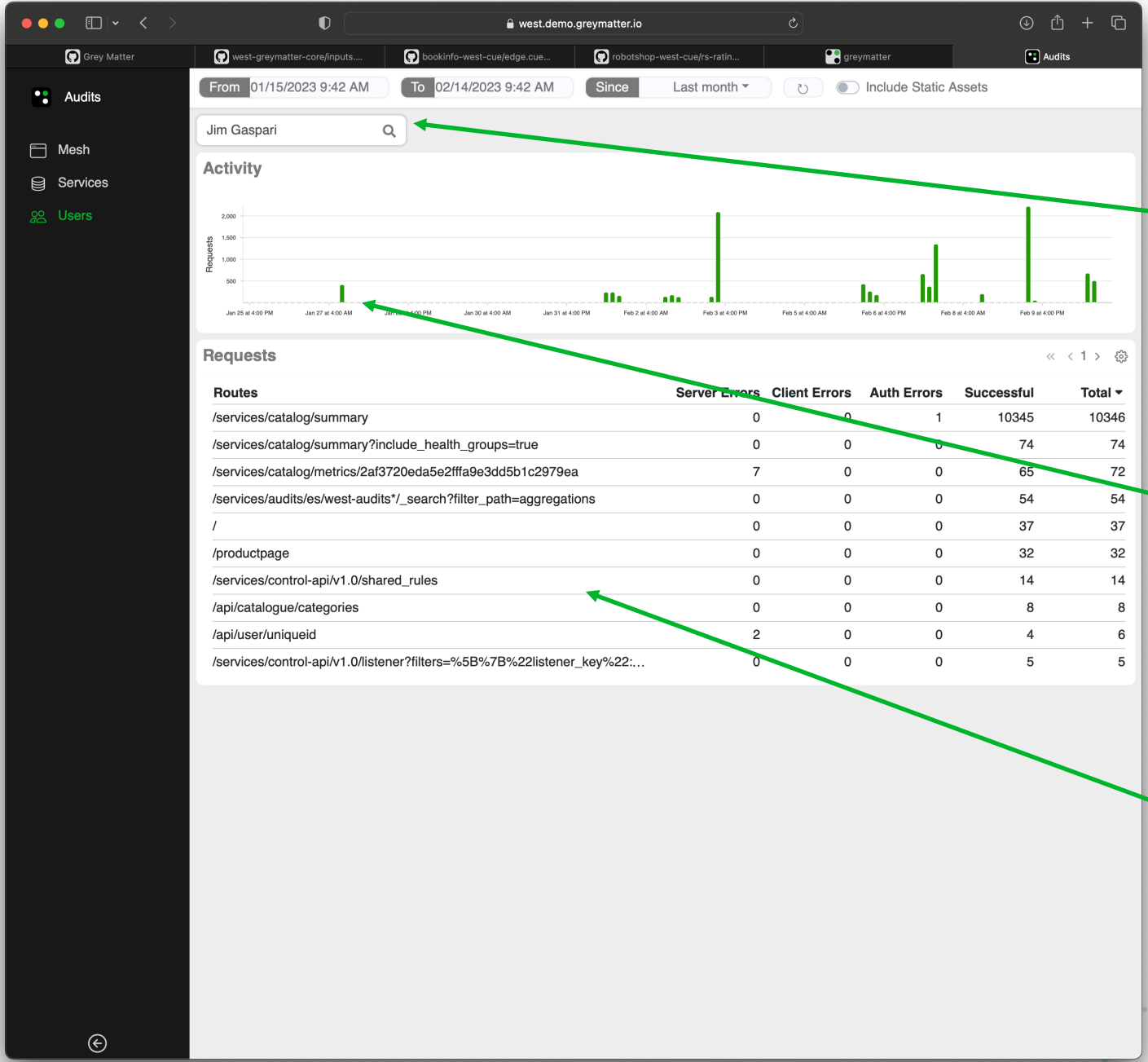
Know how well your service mesh supports your users

Route, User, and Browser metrics at a glance



Quickly ID a service's number one dependencies

Service and user tracking highlights your most active users per service



Track individual users by name

Pattern analysis to surface out-of-band user activity

Know what was touched, by who, when, and the outcome